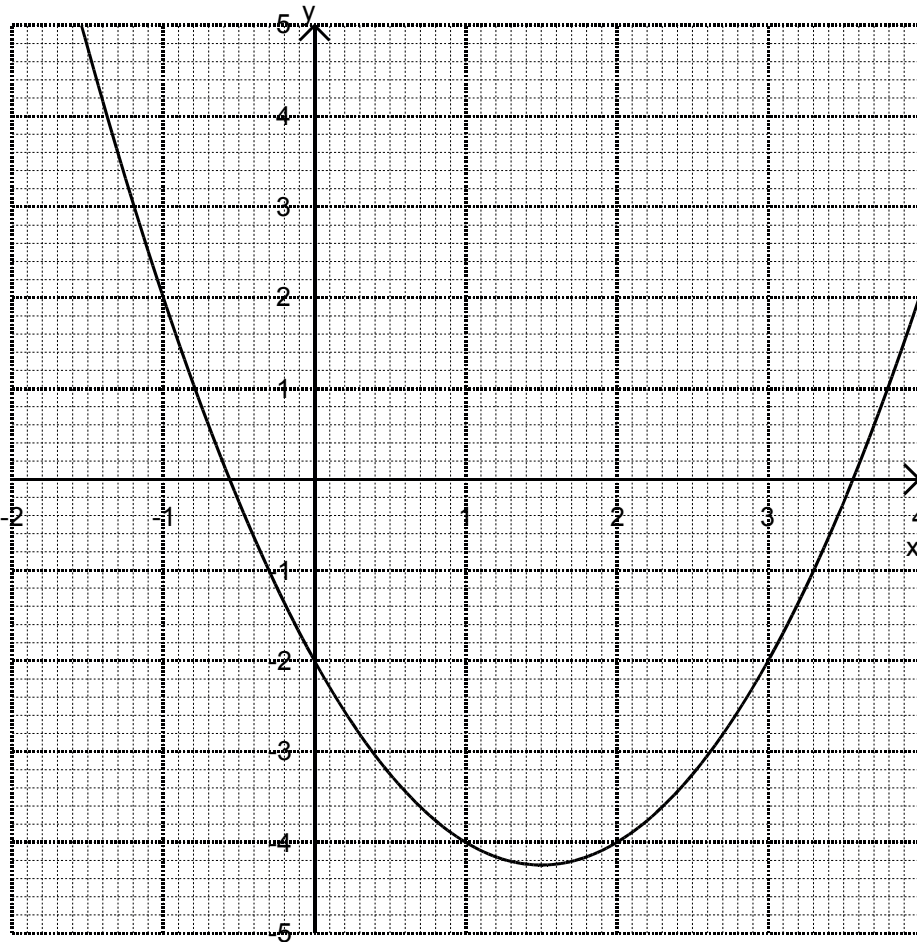


Solving equations using graphs

1) Below is the graph of the equation $y = x^2 - 3x - 2$



By drawing a straight line, find the solutions of the following equations:

(i) $x^2 - 3x - 2 = 1$ _____

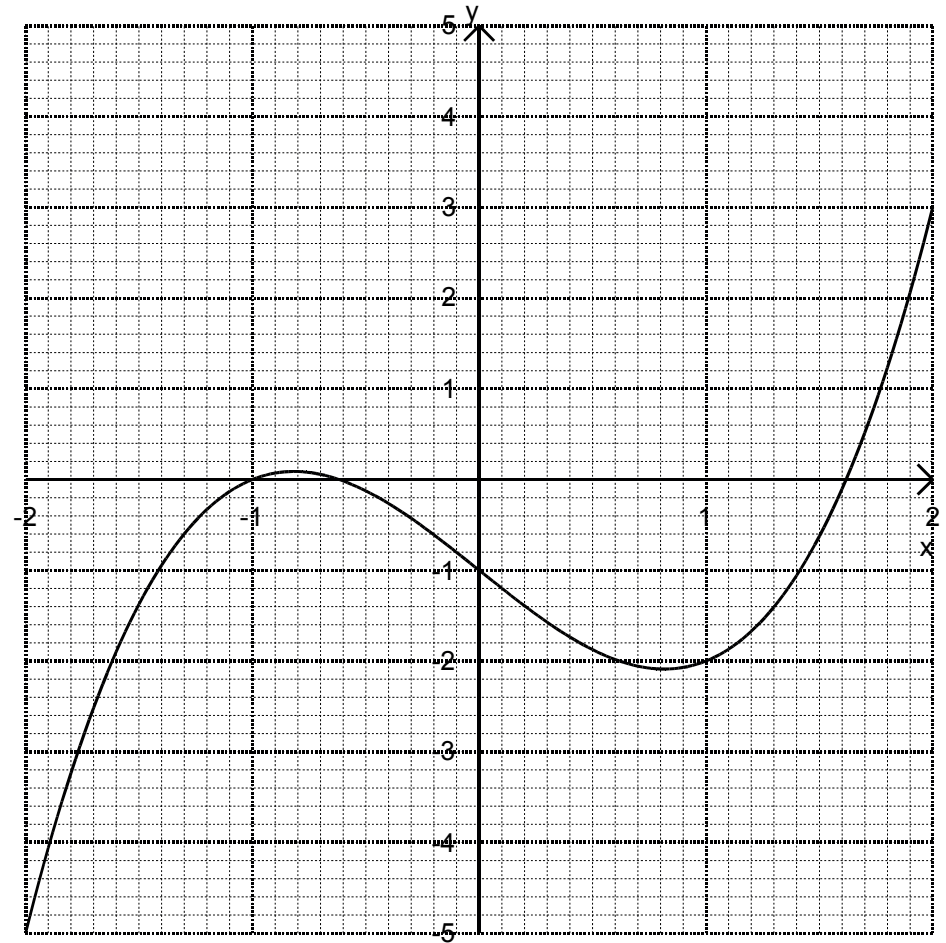
(ii) $x^2 - 3x - 2 = -3$ _____

(iii) $x^2 - 3x - 2 = -5$ _____

(iv) $x^2 - 3x - 2 = x - 3$ _____

(v) $x^2 - 3x - 2 = 1 - \frac{1}{2}x$ _____

2) Below is the graph of the equation $y = x^3 - 2x - 1$



By drawing a straight line, find the solutions of the following equations

(i) $x^3 - 2x - 1 = -1$ _____

(ii) $x^3 - 2x - 1 = 2$ _____

(iii) $x^3 - 2x - 1 = x - 2$ _____

(iv) $x^3 - 2x - 1 = 1 - 2x$ _____