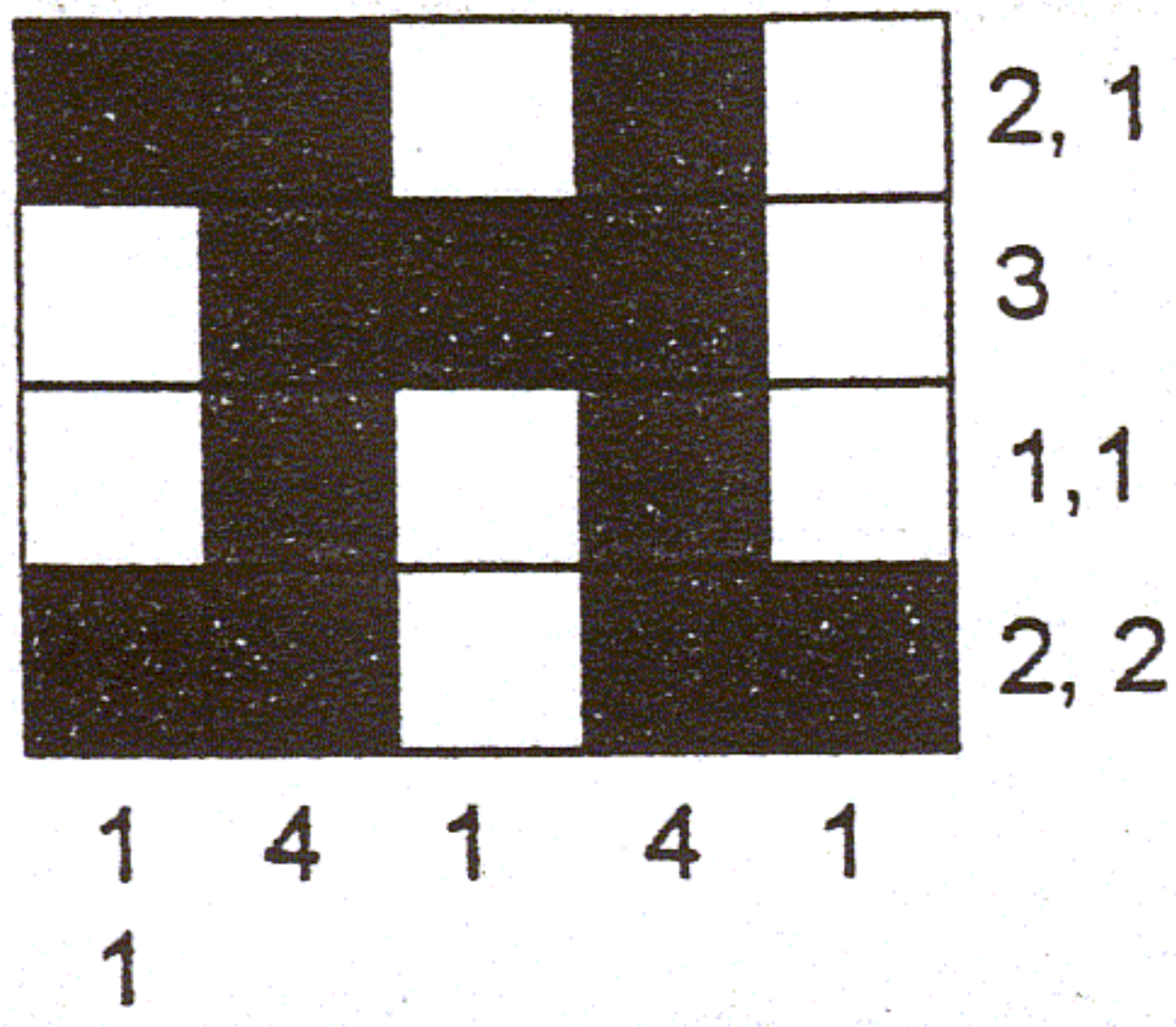


Christmas Paint by Numbers Puzzle

Shade in the correct squares to create a logo

Example: this "H" logo is completed.



The numbers to the right of the grid show you how many squares to shade in. The 2 and the 1 by the top row show that there is a block of 2 followed by a block of one. The numbers below the grid also show you how many squares to shade in the column above. So in column one you have 1 square shaded above another 1 square shaded. There must be *at least* one square space between shaded squares.

Try this simple one:

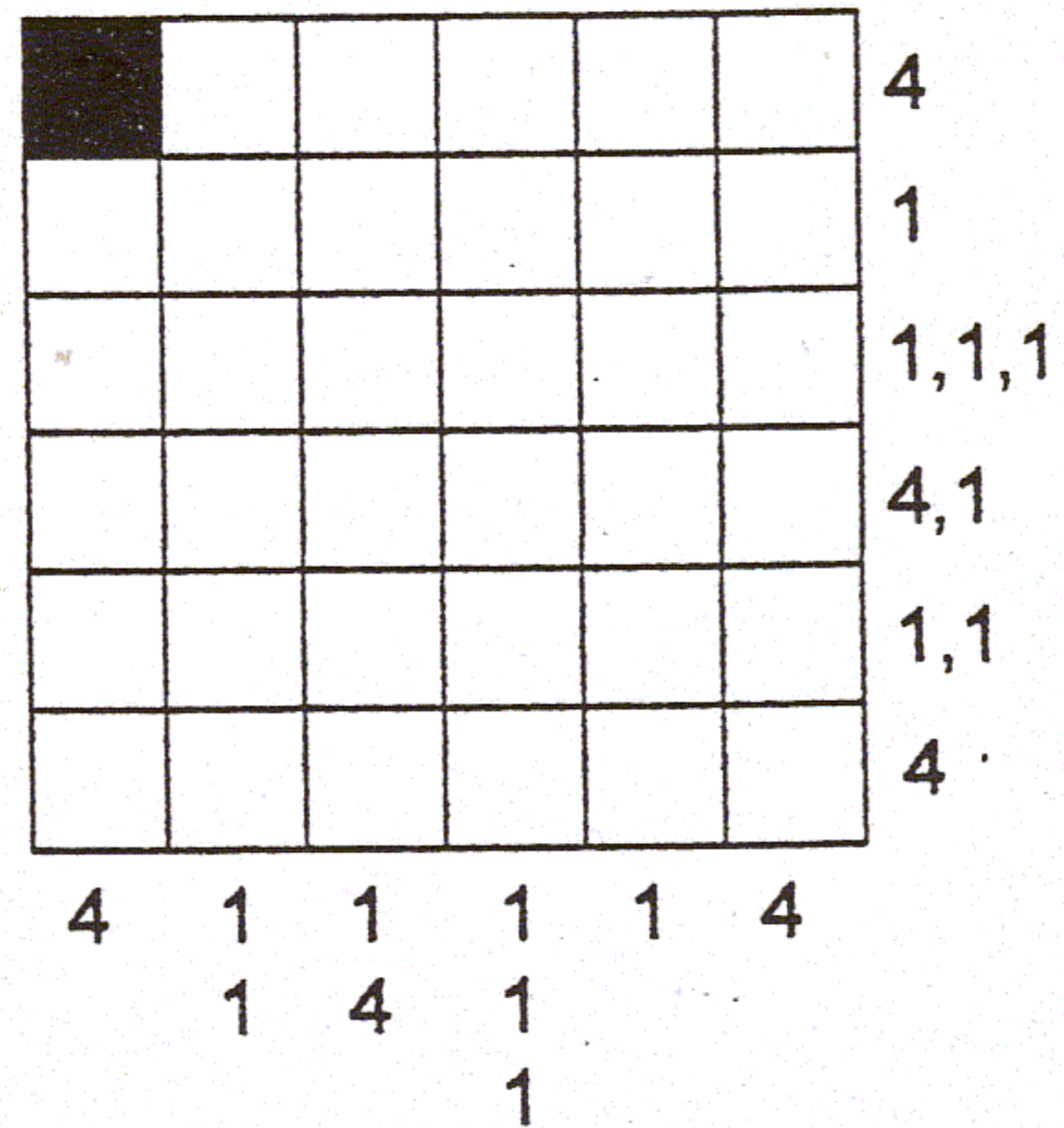
You are given one square to help you start.

Take your time.

Do not guess.

Be *sure* before shading in a square.

"Company Logo"



Now try the big one:

"Rudolf rushes off"

